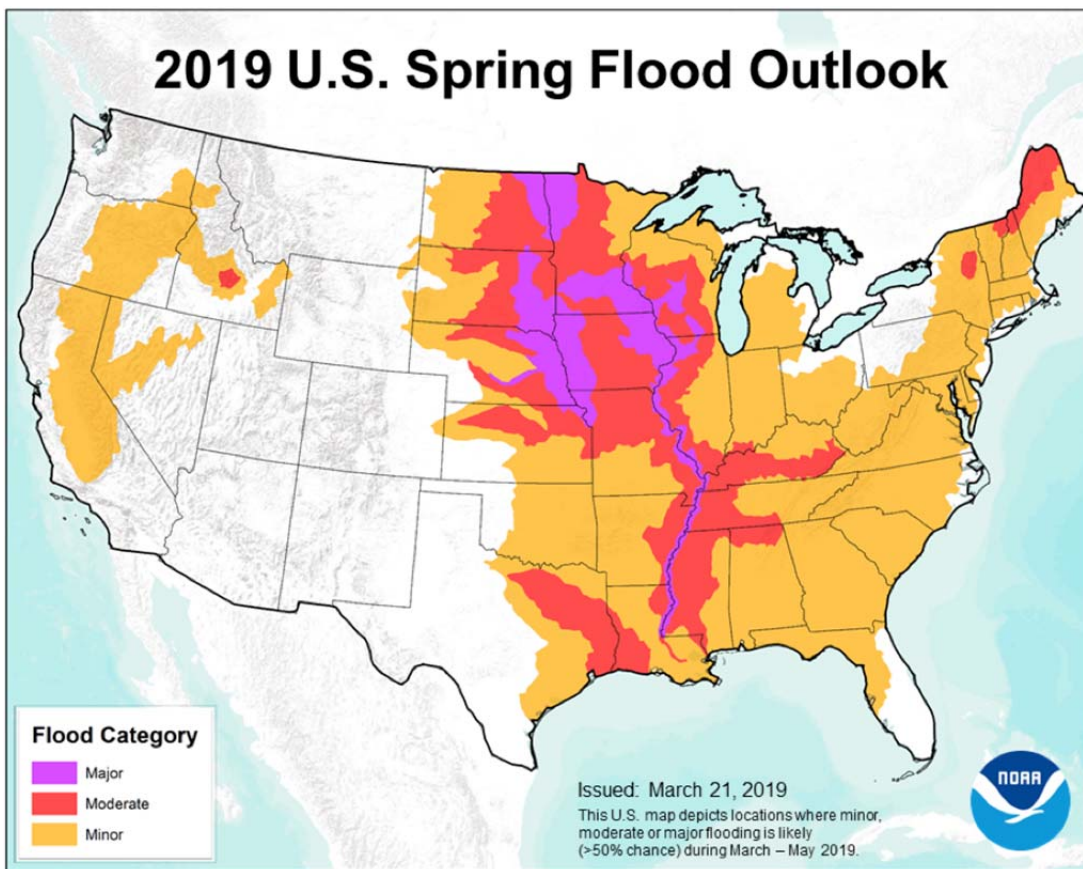


Mississippi River Basin, USA		FLOODS	
Affected Areas	USA, Mississippi River Basin	Death Toll	12
	Midwest and South Tennessee, Mississippi, Nebraska, Missouri, Minnesota, Iowa, North Dakota, South Dakota, Oklahoma, Kansas, Louisiana, Arkansas		
Period	February 21 to August 14, 2019		
Outline	Mississippi River and its tributaries overflowed due to snowmelt and heavy rains since March. Floods affected vast area for a long term.	Missing	1

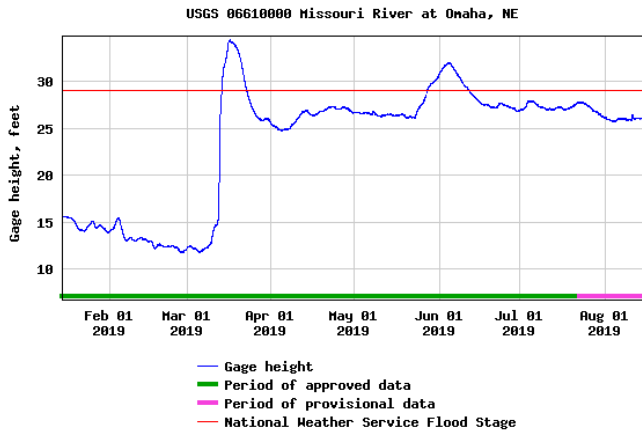
The above information is based on press release by media and government agencies.



Source: NOAA/NWS <https://www.nws.noaa.gov/oh/2019NHA.html>

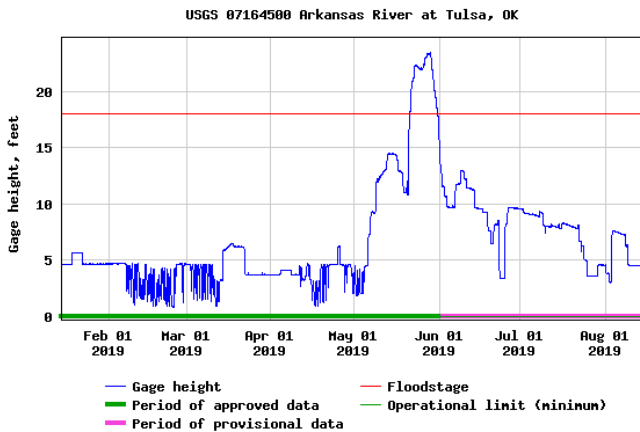


River Level by USGS



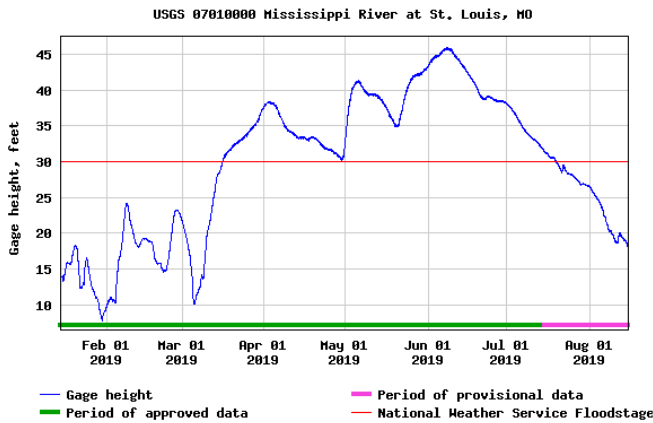
Source:

https://nwis.waterdata.usgs.gov/ne/nwis/uv/?cb_00065=on&format=gif_default&site_no=06610000&period=&begin_date=2019-01-15&end_date=2019-08-15



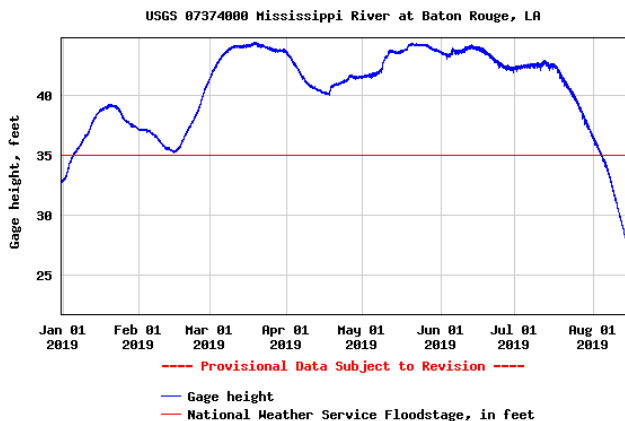
Source:

https://nwis.waterdata.usgs.gov/ok/nwis/uv/?cb_00065=on&format=gif_default&site_no=07164500&period=&begin_date=2019-01-15&end_date=2019-08-15



Source:

https://nwis.waterdata.usgs.gov/mo/nwis/uv/?cb_00065=on&format=gif_default&site_no=07010000&period=&begin_date=2019-01-15&end_date=2019-08-15

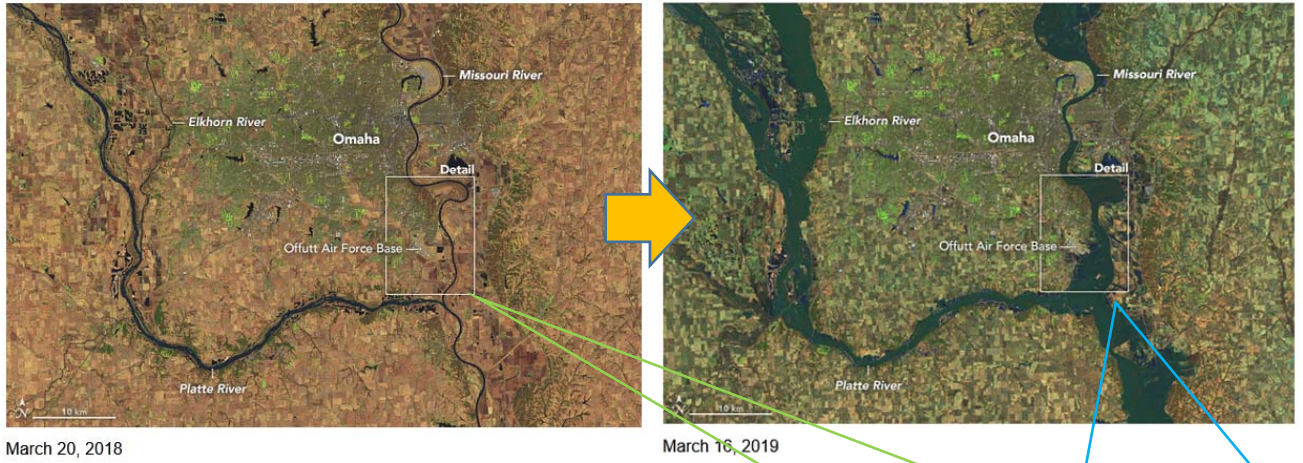


Source:

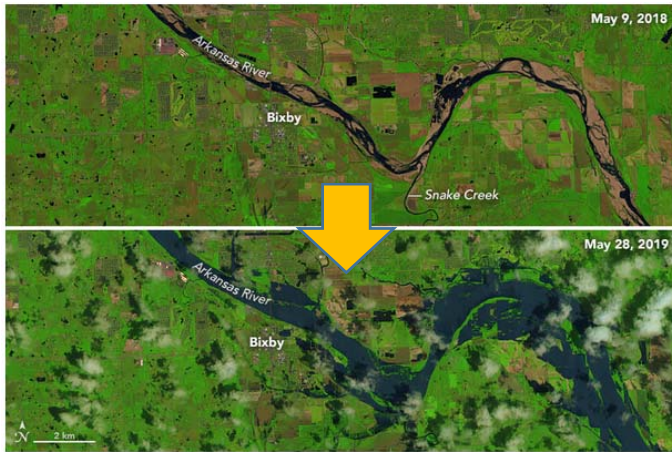
https://nwis.waterdata.usgs.gov/nwis/uv/?cb_00065=on&format=gif_default&site_no=07374000&period=&begin_date=2019-01-01&end_date=2019-08-15



Before and After Images by NASA



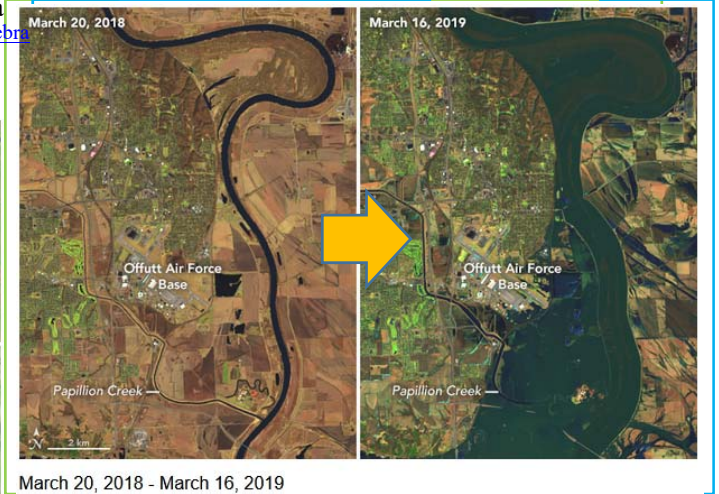
March 20, 2018
 Confluence of Platte River and Missouri River in Nebraska
<https://earthobservatory.nasa.gov/images/144691/historic-floods-inundate-nebraska>



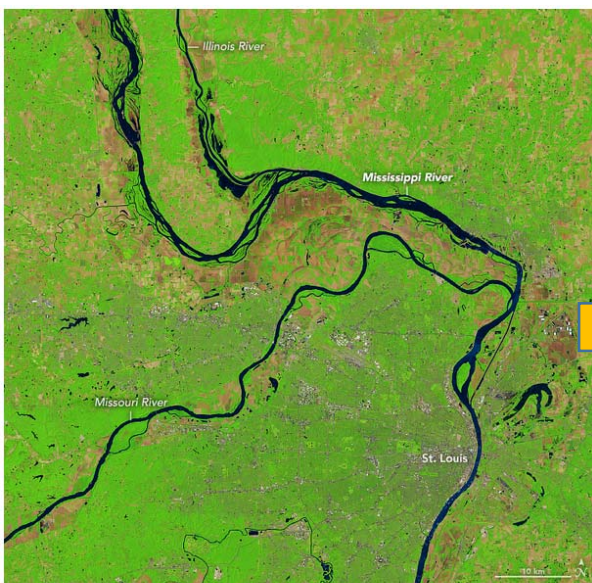
May 9, 2018 - May 28, 2019

Arkansas River in Oklahoma

<https://earthobservatory.nasa.gov/images/145108/flooding-along-the-arkansas-river>



March 20, 2018 - March 16, 2019



June 5, 2018



May 7, 2019

Mississippi River near St. Louis, Missouri

<https://earthobservatory.nasa.gov/images/145029/flooding-continues-along-the-mississippi>



一般社団法人 国際建設技術協会
 Infrastructure Development Institute - Japan